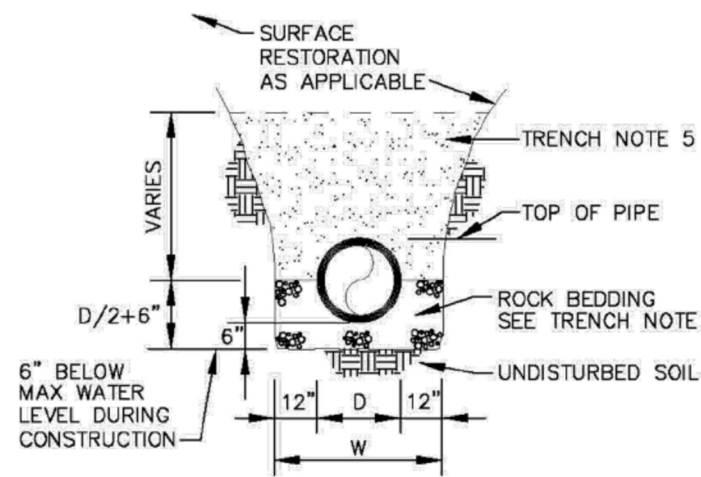
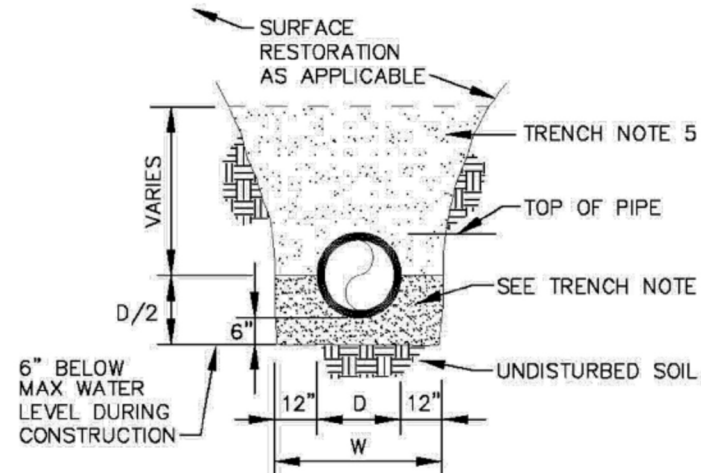


J:\City-STANDARDS\2019 Standards Details\Sanitary 2-1.dwg, 11/2/2018 1:59:06 PM



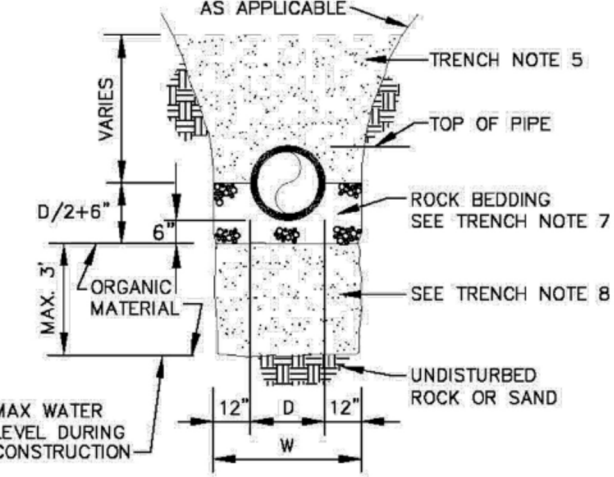
TRENCH BACKFILL / BEDDING
CLASS "B"



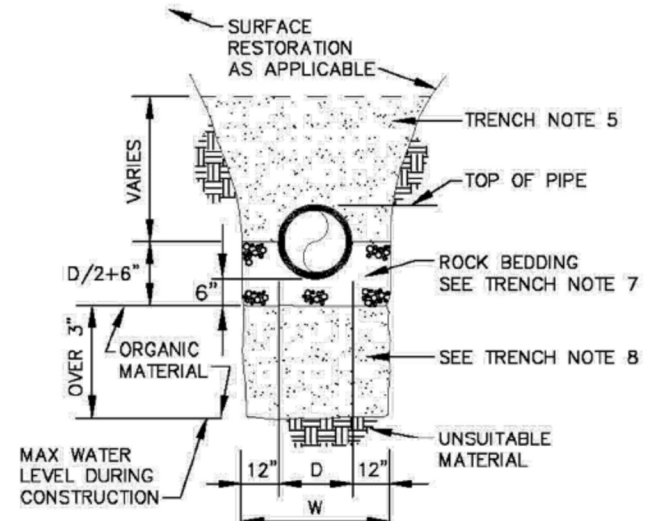
TRENCH BACKFILL / BEDDING
CLASS "A"

ENGINEERING STANDARDS 2019

REVISIONS	ENGINEERING DIVISION	TRENCH BACKFILL / BEDDING
BY DATE	CITY OF POMPAÑO BEACH	
S.S. JUNE 2005		DATE: JUNE 1996 DWG. NO.
	SCALE: N.T.S.	203-1



TRENCH BACKFILL / BEDDING
CLASS "C"

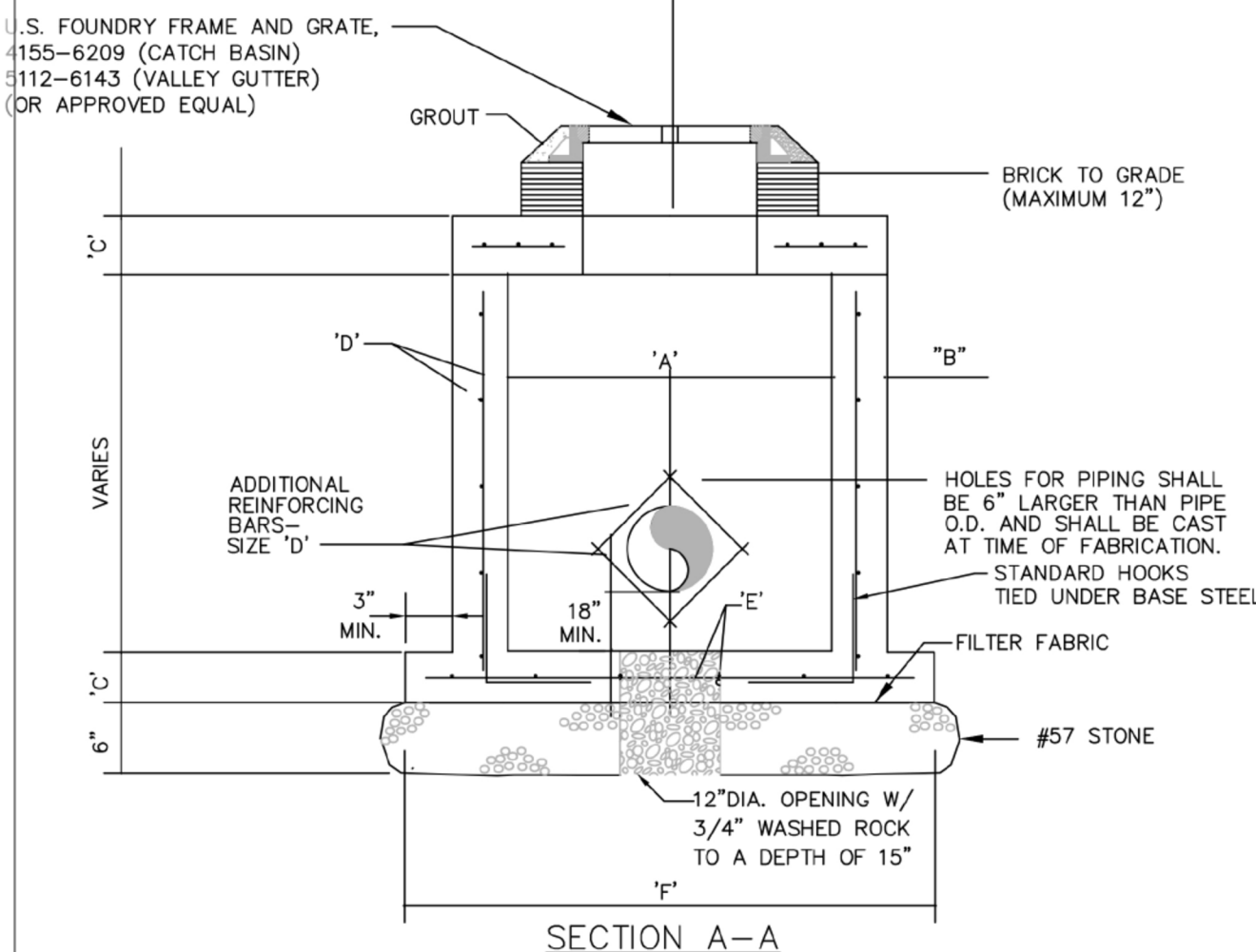


TRENCH BACKFILL / BEDDING
CLASS "D"

ENGINEERING STANDARDS 2019

REVISIONS	ENGINEERING DIVISION	TRENCH BACKFILL / BEDDING
BY DATE	CITY OF POMPAÑO BEACH	
S.S. JUNE 2005		DATE: JUNE 1996 DWG. NO.
	SCALE: N.T.S.	203-2

J:\City-STANDARDS\2019 Standards Details\Sanitary 2-1.dwg, 11/2/2018 2:00:33 PM

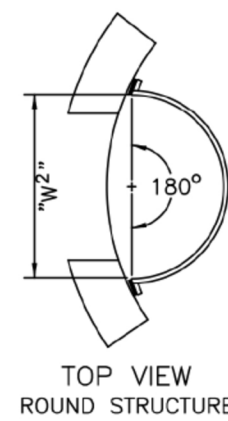
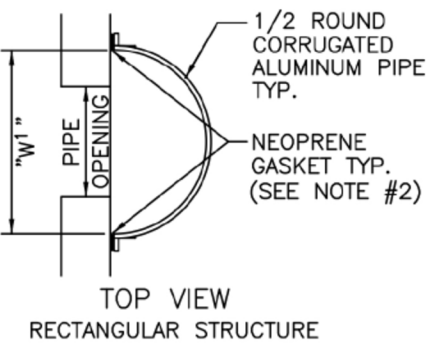
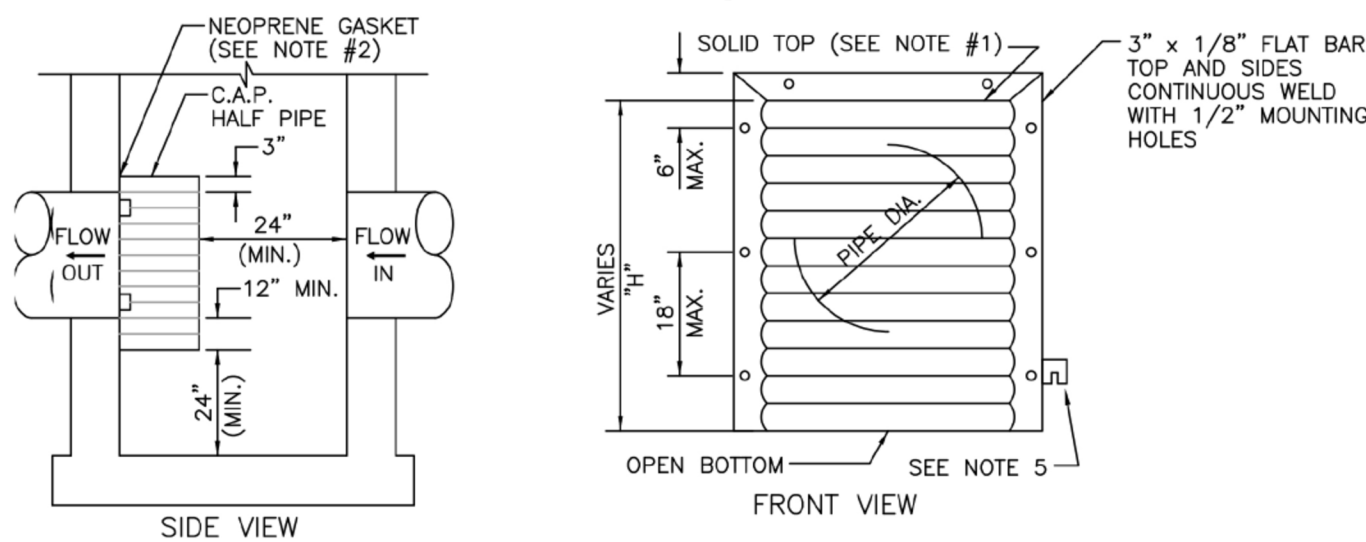


SECTION A-A

TYPE	"A"	"B"	"C"	"D"	"E"	"F"
C-4	4'-0" @ 8"	8" @ 12"	12" C.C.E.W.	12" C.C.E.W.	12" C.C.E.W.	6'-4" @ 12"
C-5	5'-0" @ 8"	8" @ 12"	12" C.C.E.W.	12" C.C.E.W.	12" C.C.E.W.	7'-4" @ 12"
C-6	6'-0" @ 8"	8" @ 12"	12" C.C.E.W.	12" C.C.E.W.	12" C.C.E.W.	8'-4" @ 12"
C-7	7'-0" @ 8"	8" @ 12"	12" C.C.E.W.	12" C.C.E.W.	12" C.C.E.W.	9'-4" @ 12"
C-8	8'-0" @ 10"	10" @ 12"	12" C.C. VERT	12" C.C. VERT	12" C.C. VERT	10'-8" @ 12"

PRECAST CIRCULAR DRAINAGE STRUCTURES
N.T.S.

POLLUTION RETARDANT BAFFLE



PIPE DIA.	W ¹ (IN)	W ² (IN)	T (GAUGE)	H (IN)
15"	21"	21"	16	VARIES
18"	24"	24"	16	VARIES
21"	30"	30"	16	VARIES
24"	30"	36"	16	VARIES
30"	36"	42"	14	VARIES
36"	42"	54"	14	VARIES

1. RECTANGULAR STRUCTURE
2. ROUND STRUCTURE

NOTES:

1. ALUMINUM SHEET OF SAME THICKNESS (GAUGE) AS PIPE SHALL BE WELDED TO CLOSE OPENING AT THE TOP.
2. NEOPRENE ADHESIVE BACKED GASKET, OR APPROVED EQUAL (1" x 2") SHALL BE INSTALLED ON THE SIDES AND TOP OF ALL BAFFLES.
3. POLLUTION RETARDANT BAFFLE TO BE FASTENED IN PLACE WITH 3/8"x4" STAINLESS STEEL "RED HEADS", OR APPROVED EQUAL.
4. FIBERGLASS BAFFLES ARE NOT PERMITTED.
5. MOUNTING BRACKETS MAY BE ADDED TO FLAT BARS TO EASE INSTALLATION IN ROUND STRUCTURES. SPACING TO MATCH HOLES IN FLAT BARS.
6. THE BOTTOM ELEVATION OF THE POLLUTION RETARDANT BAFFLE SHALL BE AT LEAST 2' BELOW THE CONTROL ELEVATION OF N.G.V.D. 3.0'.

POLLUTION RETARDANT BAFFLE
N.T.S.

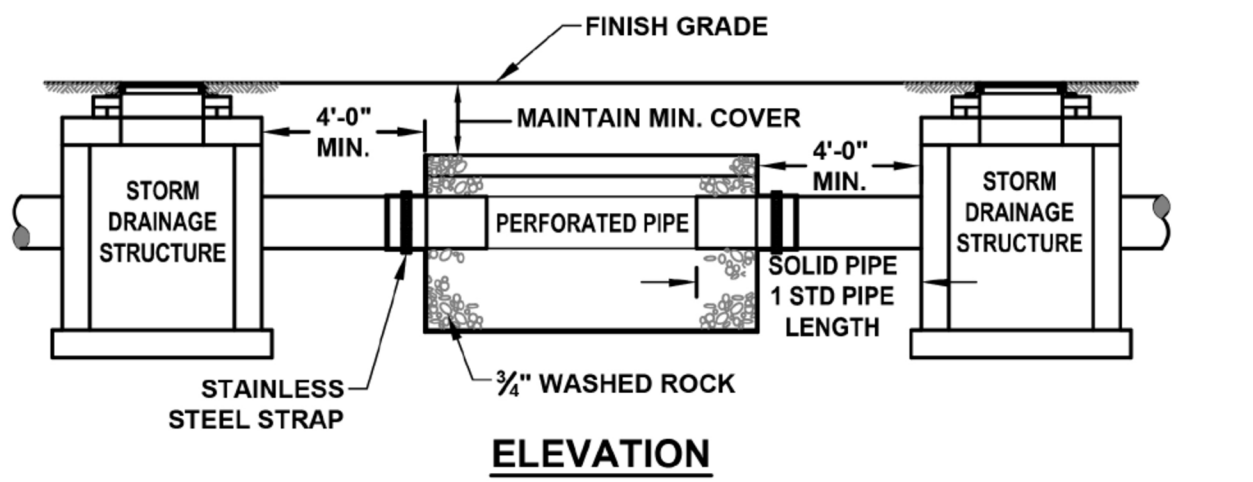
1. OUTLINE OF TRENCH EXCAVATION IS FOR ILLUSTRATIVE PURPOSES ONLY. ACTUAL TRENCH WIDTH AND SHAPE WILL VARY WITH SOIL CONDITIONS. TRENCH EXCAVATION SHALL BE IN ACCORDANCE WITH THE "FLORIDA TRENCH SAFETY ACT" AND OSHA TRENCH SAFETY STANDARDS.
2. TYPICAL TRENCH BACKFILL/BEDDING FOR WATER MAIN AND FORCE MAIN INSTALLATIONS SHALL BE CLASS "A" AS SHOWN IN DETAIL.
3. TYPICAL TRENCH BACKFILL/BEDDING FOR GRAVITY SEWER INSTALLATION SHALL BE CLASS "B" AS SHOWN IN DETAIL.
4. TRENCH BACKFILL/BEDDING CLASS "C" AND CLASS "D" SHALL BE USED FOR PIPE INSTALLATIONS WHERE UNSATABLE TRENCH MATERIALS ARE ENCOUNTERED.
5. TRENCH ZONE BACKFILL SHALL BE MATERIAL TYPE 1 OR TYPES A THRU H, OR ANY MIXTURE THEREOF, WHERE SURFACE RESTORATION TYPE "1" IS APPLICABLE. TRENCH ZONE BACKFILL SHALL BE PLACED IN 12" LIFTS, COMPACTED TO 90% OF THE MATERIAL'S MAXIMUM DENSITY AS DETERMINED BY ASTM D-697 (AASHTO T-99). WHERE SURFACE RESTORATION TYPES "2", "3" AND "4" ARE APPLICABLE, TRENCH BACKFILL SHALL BE PLACED IN 8" LIFTS COMPACTED TO 98% OF THE MATERIAL'S DENSITY AS DETERMINED BY ASTM D-698 (AASHTO T-99).
6. BEDDING MATERIAL FOR TYPICAL WATER MAIN AND FORCE MAIN INSTALLATION SHALL BE TYPE C. BEDDING SHALL BE COMPACTED TO 95% OF THE MATERIAL'S MAXIMUM DENSITY AS DETERMINED BY ASTM D-1557 (AASHTO T-180).
7. BEDDING MATERIAL FOR TYPICAL GRAVITY SEWER INSTALLATION AND ANY INSTALLATION WHERE UNSATABLE TRENCH BOTTOM CONDITIONS ARE FOUND SHALL BE TYPE E. BEDDING SHALL BE PLACED IN LIFTS NOT TO EXCEED 6" AND COMPACTED TO 95% OF THE MATERIAL'S MAXIMUM DENSITY AS DETERMINED BY ASTM D-1557 (AASHTO T-180).
8. UNSATABLE MATERIAL SHALL BE REMOVED TO UNDISTURBED ROCK OR SAND OR TO DEPTH AS SPECIFIED BY ENGINEER. BACKFILL MATERIAL SHALL BE TYPE C. BACKFILL SHALL BE PLACED IN 8" LIFTS COMPACTED TO 95% OF THE MATERIAL'S MAXIMUM DENSITY AS DETERMINED BY ASTM D-1557 (AASHTO T-180).

TRENCH BACKFILL / BEDDING NOTES

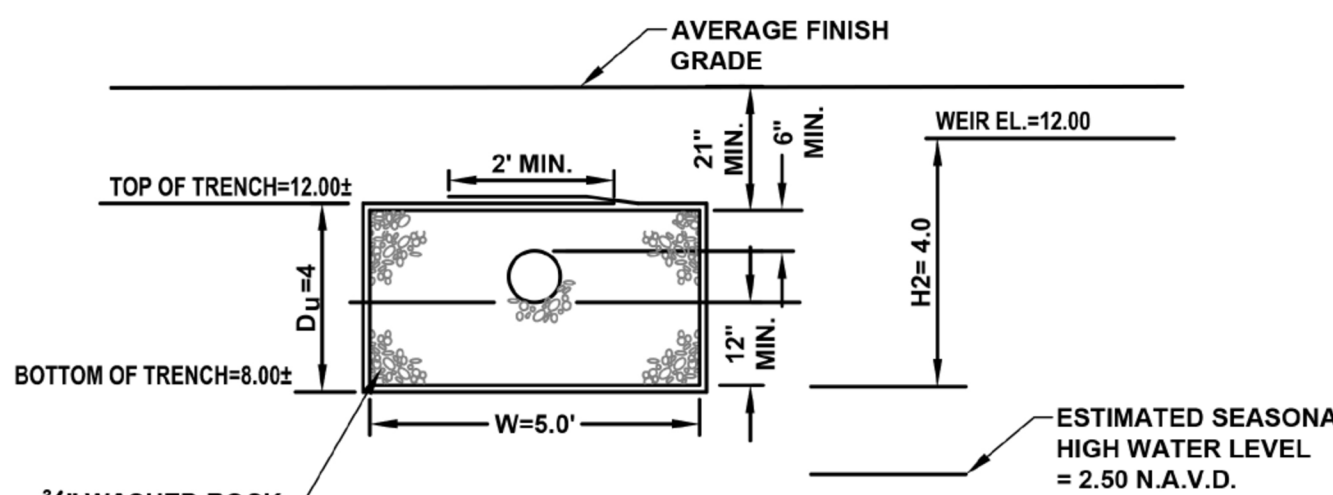
ENGINEERING STANDARDS 2019

REVISIONS	ENGINEERING DIVISION	TRENCH BACKFILL / BEDDING
BY DATE	CITY OF POMPAÑO BEACH	
	SCALE: N.T.S.	DATE: JUNE 1996 DWG. NO.
		203-3

J:\City-STANDARDS\2019 Standards Details\Sanitary 2-1.dwg, 11/2/2018 2:01:00 PM



ELEVATION



SECTION

NOTES:

1. PIPES SHALL CONNECT TO ADDITIONAL CATCH BASINS AS REQUIRED.
2. BALLAST ROCK SHALL BE FROM FRESH WATER WASHED FREE OF DELETERIOUS MATTER.
3. TRENCH TO BE LINED WITH AMOCO PROPEX 4545 OR APPROVED EQUIVALENT TYPE FILTER FABRIC. OVERLAP TRENCH LINING MATERIAL A MINIMUM OF 2' AT TOP OF TRENCH. CLOSE ENDS AND STRAP AROUND PIPE.
4. BIO-BARRIER SHALL BE INSTALLED ADJACENT TO EXFILTRATION TRENCH WHEN EXISTING OR PROPOSED TREES ARE LOCATED WITHIN 10.0' OF CENTERLINE OF PIPE. INSTALLATION OF BIO-BARRIER SHALL BE IN ACCORDANCE WITH BIO-BARRIER DETAIL (SEE LANDSCAPE DRAWING DETAILS).

EXFILTRATION TRENCH DETAIL: (5'X4')

SCALE: N.T.S.

9. BEDDING TYPES - THE FOLLOWING TYPES OF SUITABLE MATERIALS ARE DESIGNATED AND DEFINED AS FOLLOWING:

TYPE A: CRUSHED LIMEROCK OR SAND WITH 100 PERCENT PASSING A 1 INCH SIEVE AND A SAND EQUIVALENT VALUE NOT LESS THAN 50.

TYPE B: CRUSHED LIMEROCK OR SAND WITH 100 PERCENT PASSING A 1/2 INCH SIEVE AND A SAND EQUIVALENT VALUE NOT LESS THAN 50.

TYPE C: SAND WITH 100 PERCENT PASSING A 3/8 INCH SIEVE, AT LEAST 90 PERCENT PASSING A NUMBER 4 SIEVE, AND A SAND EQUIVALENT VALUE NOT LESS THAN 30.

TYPE D: CRUSHED LIMEROCK WITH 100 PERCENT PASSING A 1 INCH SIEVE AND NOT MORE THAN 10 PERCENT A NUMBER 4 SIEVE.

TYPE E: CRUSHED LIMEROCK OR SAND WITH 100 PERCENT PASSING A 3/4 INCH SIEVE AND NOT MORE THAN 10 PERCENT PASSING A NUMBER 4 SIEVE.

TYPE F: CRUSHED LIMEROCK MEETING THE FOLLOWING GRADATION REQUIREMENTS.

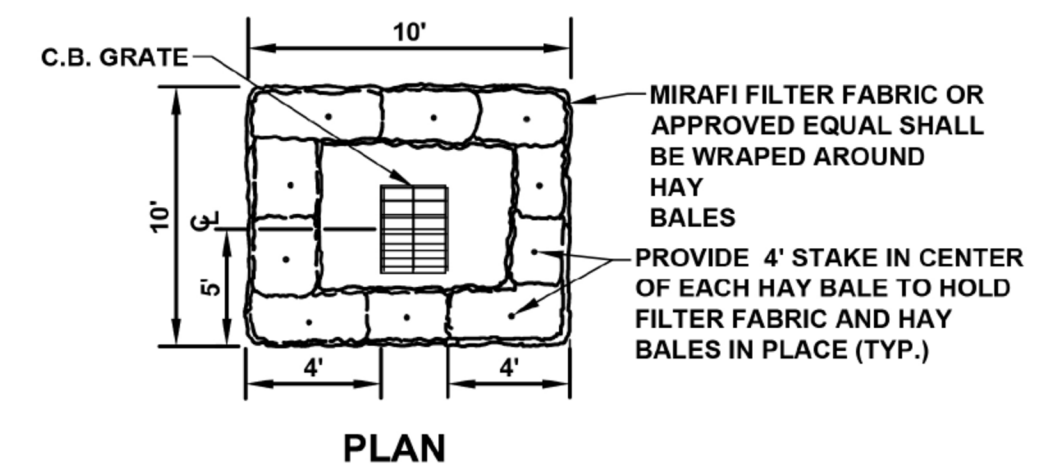
SIEVE SIZE	PERCENTAGE PASSING
2 INCH	100
1-1/2 INCH	90-100
1 INCH	20-55
3/4 INCH	0-15
NO. 200	0-3

TRENCH BACKFILL / BEDDING NOTES

ENGINEERING STANDARDS 2019

REVISIONS	ENGINEERING DIVISION	TRENCH BACKFILL / BEDDING
BY DATE	CITY OF POMPAÑO BEACH	
	SCALE: N.T.S.	DATE: JUNE 1996 DWG. NO.
		203-4

J:\City-STANDARDS\2019 Standards Details\Sanitary 2-1.dwg, 11/2/2018 2:01:27 PM



PLAN

HAY BALE DETAIL

SCALE: N.T.S.

OWNER | DEVELOPER:



DESIGN + BUILD CONTRACTOR:



DESIGN CONSULTANT:



ARCHITECT OF RECORD:

RUBEN J. PUJOL
A.I.A. AR # 0010458
PHONE: (305) 968-2155
12237 S.W. 204 TERRACE
MIAMI, FLORIDA 33177

SIGN AND SEAL:



Digitally signed
by Fabio J
Delgado De
Michele
Date: 2023.06.16
19:54:43 -04'00'

REVISIONS/COMMENTS:

PROJECT:

324 HAUS
MIXED USE | FLEX BUILDING
324 NW 6TH STREET
POMPAÑO BEACH, FL 33060

PROJECT NO.: 22-031

DRAWN BY:
DATE: JULY- 2022

SHEET NAME:

PAVING, GRADING
AND DRAINAGE
DETAILS

DRC
P22-12000032
07/19/2023